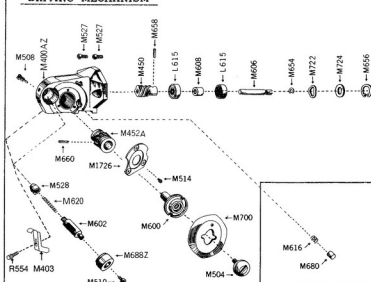
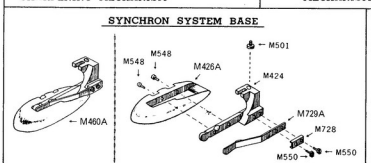


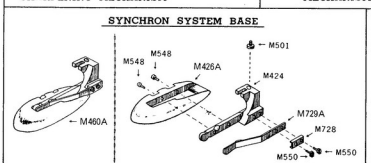
## DRIVING MECHANISM



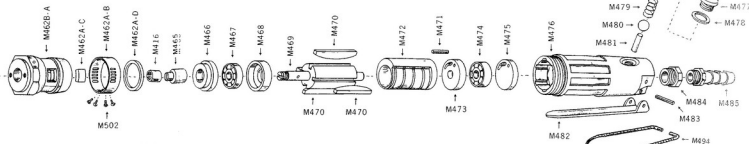
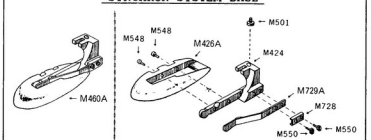
## SHARPENING MECHANISM



## LUBRICATING MECHANISM



## SYNCHRON SYSTEM BASE

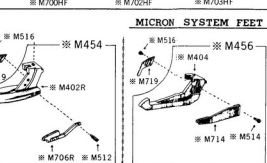


## AIR MOTOR ASSY. M490B

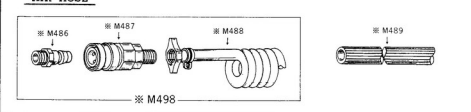
## KNIVES



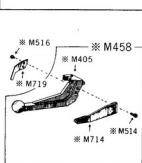
## KNIVES



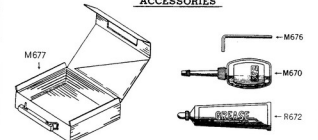
## AIR HOSE



## KNIVES



## ACCESSORIES



## DRIVING MECHANISM

- M400AZ --- Gear Housing Complete
- M450 --- Worm
- M452A --- Worm Wheel
- M527 --- Allen Screw
- M504 --- Knife Lock Screw
- M508 --- Stepped Screw
- M514 --- Fillister Head Screw
- M600 --- Stepped Shaft
- M606 --- Shaft
- M608 --- Spacer
- L 615 --- Ball Bearing
- M654 --- E Ring
- M656 --- Snap Ring
- M658 --- Spring Pin
- M660 --- Spring Pin
- M700 --- 6-Sided Knife

- M722 --- Undulated Washer
  - M724 --- Washer
  - M1726 --- Cover Plate Complete
  - M440A --- Worm Wheel Assy.
  - M403 --- Finger Guard
  - R554 --- Knob Screw
- ## SHARPENING MECHANISM
- M510 --- Flat Head Screw
  - M528 --- Push Button
  - M602 --- Stepped Shaft
  - M620 --- Spring
  - M688Z --- Sharpening Stone Complete
  - M444 --- Sharpener Assy.
- ## LUBRICATING MECHANISM
- M616 --- Spring

## AIR MOTOR ASSY.

- M680 --- Oil Pad
- ## AIR MOTOR ASSY.
- M462B-A --- Connector
  - M462A-B --- Silencer
  - M462A-C --- Filter C
  - M462A-D --- Filter D
  - M416 --- Coupling
  - M465 --- Nut
  - M466 --- Guide Plate
  - M467 --- Ball Bearing
  - M468 --- Front Bracket
  - M469 --- Rotor
  - M470 --- Vane
  - M471 --- Spring Pin
  - M472 --- Cylinder
  - M473 --- Rear Bracket
  - M474 --- Ball Bearing

## MICRON SYSTEM FEET

- M475 --- End Plate
- M476 --- Motor Case
- M477 --- Valve Screw
- M478 --- Packing
- M479 --- Spring
- M480 --- Ball
- M481 --- Valve Pin
- M482 --- Throttle Lever
- M483 --- Spring Pin
- M484 --- Air Inlet Joint (P.T.1/4)
- M485 --- Air Inlet
- M494 --- Hanger Hook
- M490B --- AIR MOTOR ASSY.
- M502 --- Socket Screw

## KNIVES

- M700 --- 6-Sided Knife
  - M700HF --- Heat Free Teflon 6-Sided Knife
  - M702 --- Round Knife
  - M703 --- 8-Sided Knife
  - M703HF --- Heat Free Teflon 8-Sided Knife
- ## AIR HOSE
- M486 --- Air Inlet (for M487)
  - M487 --- Air Inlet Socket (for M488)
  - M488 --- Coiling Air Hose (inside dia. 9.5mm—3/8")
  - M489 --- Polyurethane Air Hose
  - M498 --- Coiling Air Hose Assy.

## SYNCHRON SYSTEM BASE

- M424 --- Cutting Foot
  - M426A --- Base Plate
  - M501 --- Flat Head Screw
  - M550 --- Flat Head Screw
  - M548 --- Round Head Screw
  - M550 --- Flat Head Screw
  - M728 --- Plate
  - M729A --- Counter Blade Complete
  - M400A --- SYNCHRON BASE ASSY.
- ## MICRON SYSTEM FEET
- M402R --- Base
  - M404 --- Cutting Guide
  - M405 --- Ball Pointed Cutting Guide

- M512 --- Screw for Base
  - M514 --- Fillister Head Screw
  - M516 --- Truss Head Screw
  - M706R --- Cutting Tip (base)
  - M714 --- Cutting Tip (Guide)
  - M719A --- Spring Plate
  - M454 --- MICRON BASE ASSY.
  - M456 --- CUTTING GUIDE ASSY.
  - M458 --- BALL POINTED CUTTING GUIDE ASSY.
- ## ACCESSORIES
- M670 --- Oiler
  - R672 --- Tube of Grease
  - M676 --- Large Allen Key
  - M677 --- Vinyl Pouch

REMARKS: PARTS (MARKED BY ※) ARE OPTIONAL PARTS AND WILL BE SUPPLIED UPON REQUEST. WHEN ORDERING PLEASE INDICATE IF REQUIRED.

## SYNCHRON SYSTEM BASE



**SYNCHRON BASE (M460A)**  
— recommendable for  
general cutting of fabric

UNSCREW (M548) and by  
removal of  
BASE PLATE (M426A)



**CUTTING FOOT (M424)** with  
COUNTER BLADE assemblies  
(M550, 728 & 729A)

— Recommendable to apply for  
cutting of

- ① Plastic or synthetics and  
sharp angle of fabrics
- ② Also slitting of knit fabrics  
and coarse fabrics



## MICRON SYSTEM FEET



**BASE (M402) and TIP COMPLETE (M706)** is good for general cutting operation of fabrics, plastics and synthetics.  
(EXTRA)



**CUTTING GUIDE (M404) and TIP COMPLETE (M714)** is recommendable for sharp angle cutting operation of fabrics, plastics and synthetics.  
(EXTRA)



**BALL POINTED CUTTING GUIDE (M405) and TIP COMPLETE (M714)** is recommendable for slitting cut or general cutting operation of knit fabrics and other coarse woven fabrics.  
(EXTRA)

## KNIVES



**6-SIDED KNIFE (M700)** for  
cutting of knit fabric, synthetics thin  
leather, plastic sheet and any slippery  
material. (STANDARD ACCESSORIES)



**ROUND KNIFE (M702)**  
for cutting of light to medium heavy  
weight of all type of fabrics and papers.  
(STANDARD ACCESSORIES)



**8-SIDED KNIFE (M703)**  
for cutting of fibreglass, hard plastics  
and thick, slippery materials.  
(OPTION ACCESSORIES)



ALSO AVAILABLE HEAT  
FREE TEFLON  
COATED KNIFE FOR  
ANTI FRICTION

## SPECIFICATIONS

### AIR MOTOR:

Air pressure used.....	: 4.5 kg/cm <sup>2</sup>
Max. horse power.....	: 0.4 HP (300 W)
Max. Torque.....	: 0.032 kg-m
Max. Speed with load.....	: 9,000 r.p.m. (without load 20,000 r.p.m.)
Max. Air consumption with load.....	: 3.8 m <sup>3</sup> /min. (without load 0.45 m <sup>3</sup> /min.)

### AIR INLET:

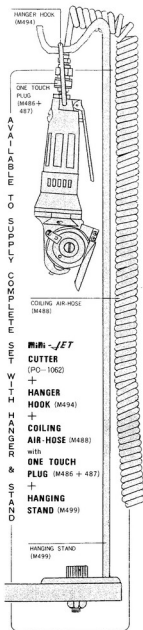
Outside Diameter.....	: 9.5 mm (3/8")
Inlet screw threading.....	: 1/4 PT
Compressor (recommendable).....	: 1.0 HP compressor for 1 cutter

### CUTTER:

Cutter.....	: 3.0 HP compressor for 2 cutter
Diameter of knife.....	: 50 mm (2")
Dimension.....	: (H) 80 mm × (W) 50 mm × (L) 235 mm
Standard accessories.....	: 2-knife/round and 6-sided, 1-Allen screw wrench, 1-grease, and 1-oil.

**WEIGHT:**..... : (NW) 0.9 kg (GW) 1.3 kg

## HANGING STAND



GENT:

Circle # 05.03. 1006MDOC

# ROBEX DK

S.r.o.

WEB: WWW.ROBEX-DK.CZ DČ: C227471489  
OBCHOD@ROBEX-DK.CZ DVOR KRÁLOVÉ NL